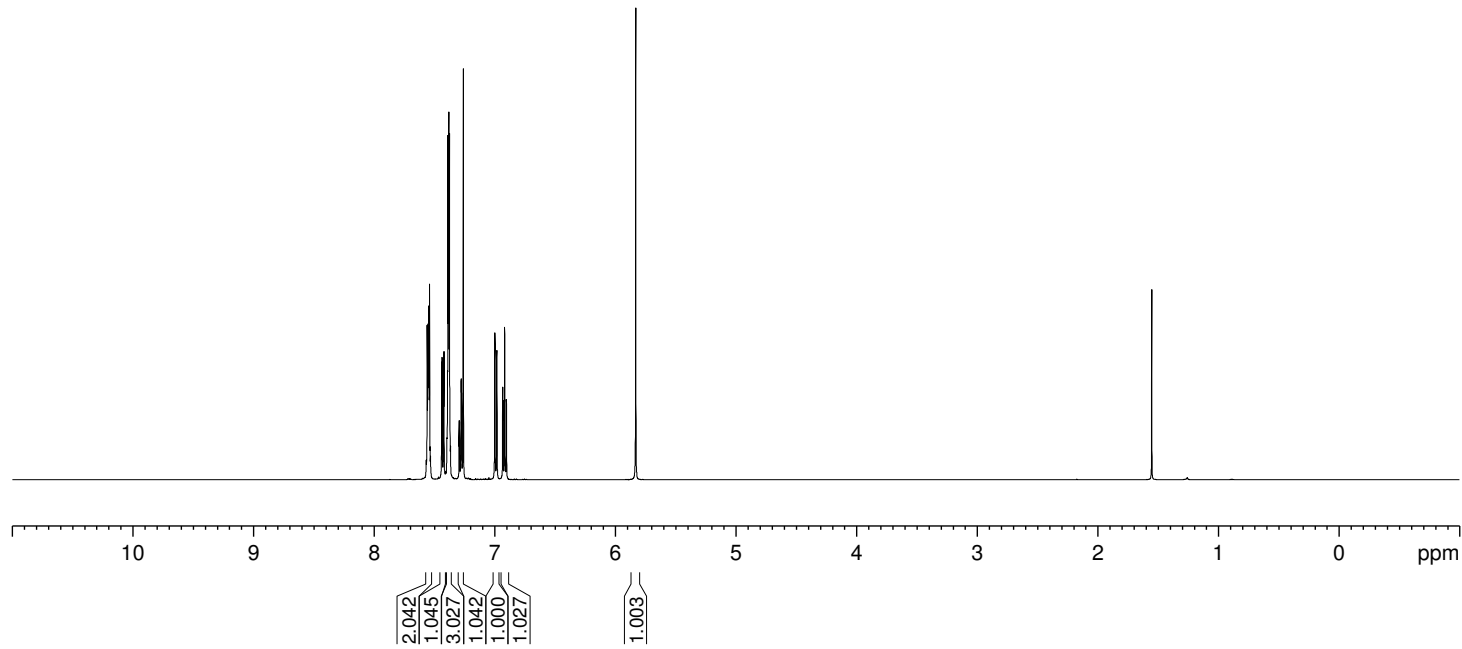
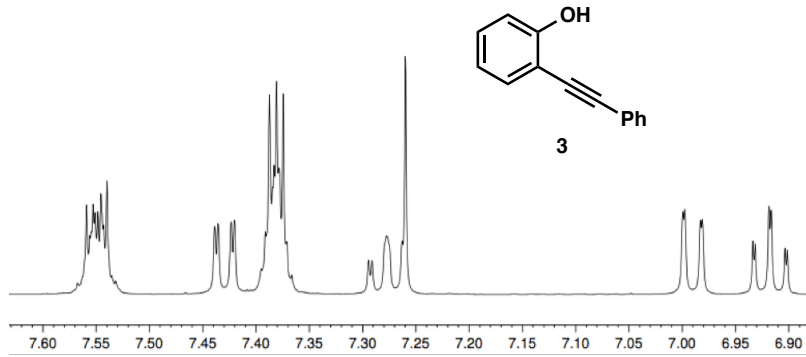


2-(phenylethynyl)phenol, 1H NMR

7.555
7.553
7.551
7.549
7.546
7.543
7.540
7.535
7.532
7.439
7.436
7.423
7.420
7.395
7.391
7.387
7.384
7.383
7.381
7.379
7.375
7.371
7.367
7.294
7.291
7.278
7.263
6.999
6.998
6.983
6.981
6.934
6.932
6.919
6.917
6.904
6.901
5.831



2-(phenylethynyl)phenol, 1H qNMR w/ mesitylene int. std.

7.574
7.571
7.570
7.567
7.564
7.562
7.558
7.459
7.456
7.443
7.440
7.411
7.407
7.403
7.399
7.397
7.394
7.390
7.387
7.312
7.309
7.295
7.281
7.277
7.020
7.019
7.004
7.002
6.952
6.950
6.937
6.935
6.922
6.919
6.828
5.857

2.302
2.301

